

Lucanet 25 – Installing a Lucanet server under macOS

Trademarks and Copyrights

Lucanet is a registered trademark of Lucanet AG.

Linux is a trademark of Linus Torvalds.

Microsoft, MS SQL Server and Windows are registered trademarks of Microsoft Corporation.

Java is a trademark of Oracle America, Inc.

Adobe and Acrobat are registered trademarks of Adobe Systems, Inc.

All other trademarks and registered trademarks mentioned in this publication are the property of their respective owners.

Table of contents

1 Installing the Lucanet server under macOS 1

2 Installing Lucanet.Software Manager 1

3 Installing Lucanet.Financial OLAP Server 3

4 Installing Lucanet.Server Administrator 5

5 Activating Lucanet software 8

6 Updating Lucanet programs 9

1 Installing the Lucanet server under macOS

Overview

From the very outset, Lucanet.**Software Manager** must be installed onto every computer that the Lucanet software is to operate on. Lucanet.**Software Manager** administrates all the Lucanet programs running on a computer and all the Java versions required by these programs with the exception of Lucanet.**Web Client**.

Instructions

To install Lucanet software components for the Lucanet server under macOS:

1. Download the installation file from the **Online Installation** area at <https://customer.lucanet.com/en/lucanet-25/downloads> for Lucanet.**Software Manager**.
2. Install Lucanet.**Software Manager** (see **Installing Lucanet.Software Manager**).
3. Install Lucanet.**Financial OLAP Server** (see **Installing Lucanet.Financial OLAP Server**).
4. Install Lucanet.**Server Administrator** (see **Installing Lucanet.Server Administrator**).
5. Activate the Lucanet license in Lucanet.**Server Administrator** (see **Activating Lucanet software**).
6. If necessary, set up the update for the Lucanet programs (see **Updating Lucanet programs**).

2 Installing Lucanet.Software Manager

Requirements

- The installation of Lucanet.**Software Manager** requires administrator permissions on the relevant computer.
- Lucanet.**Software Manager** does **not** run on virtual macOS machines!

Instructions

To install Lucanet.**Software Manager** under macOS:

1. Download the installation file from the **Online Installation** area at <https://customer.lucanet.com/en/lucanet-25/downloads>.
2. Switch to the Download directory and double-click the downloaded Setup file.
The **setup wizard** of Lucanet.**Software Manager** is displayed.
3. Click **Continue** and follow the instructions in the **setup wizard**.
After the last installation step, click **Finish**.
This completes the installation of Lucanet.**Software Manager**.
4. If necessary, change, for example, to the **launchpad** to start Lucanet.**Software Manager**.

Directories

The following directories are created during installation:

Installation directory: /Applications/LucanetSoftwareManager.app
The app contains immutable components of Lucanet. **Software Manager** and the JDK. The app is created during execution of the setup program.
Under Contents/Resources, the app file contains the following subdirectories:

Directory	Content
.bin	Contains all executable files that are not intended for direct use by a user
.computer	Contains files to open encrypted Program Resources
.jdk	Contains the current OpenJDK (such as Java Runtime Environment) The JDK_ID is composed of <vendor>+<version>.
.resources	Contains all program resources of all programs across programs and installations

Library directory: /Library/Application Support/Lucanet/Youniverse/
This directory contains immutable components of Lucanet. **Software Manager**.
The directory is created during execution of the setup program and contains the following sub-directory:

Directory	Content
.computer	Contains the unique ID of the installation Caution: The .computer directory contains the computer.In1 file. Please note that the computer.In1 file identifies all Lucanet installations on your computer. If the file is lost or damaged, the entire Lucanet installation on your computer will be irrevocably destroyed! The computer.In1 file must therefore be saved locally in a secure location.

Program data directory: /Users/Shared/Lucanet/Youniverse
This directory contains all of the components of Lucanet. **Financial OLAP Server** that can be modified:
The directory contains the following sub-directories:

Directory	Content
.data	Contains the system database(s) of Lucanet. Financial OLAP Server(s)
.resources	Contains all program resources of all programs across programs and installations
.users/<user>/manager	<ul style="list-style-type: none">The config subfolder contains the user-dependent configurationThe log subfolder contains the user-dependent log files

Updating Lucanet. Software Manager

Upon each startup of Lucanet. **Software Manager**, a verification takes place as to whether an update is available. In the event of an update, Lucanet. **Software Manager** is updated automatically via Lucanet. **Financial OLAP Server**.

Note: Because administration permissions are required to update Lucanet. **Software Manager**, you must first specify the password to receive administrator permissions before the update occur.

Configuring Lucanet.Software Manager

Information on how to configure Lucanet.**Software Manager** can be found in the online help under **Technical information | Lucanet.Software Manager**.

3 Installing Lucanet.Financial OLAP Server

Overview

Lucanet.**Financial OLAP Server** is the server component of the Lucanet software and can be installed after installation of Lucanet.**Software Manager**.

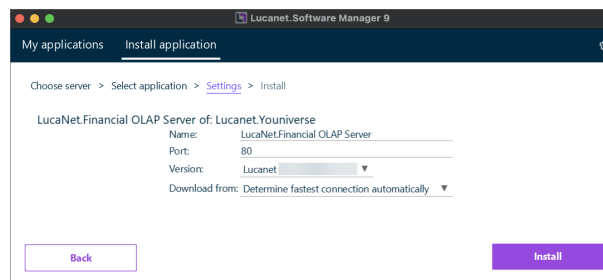
Under macOS, Lucanet.**Financial OLAP Server** can be installed as a desktop application.

Instructions

To install Lucanet.**Financial OLAP Server**:

1. Start Lucanet.**Software Manager**.
2. Retain the **Retrieve application from Lucanet.Youniverse** presetting and click **Next**.
3. Choose **Lucanet.Financial OLAP Server** and click **Next**.

Lucanet.**Software Manager** displays the **Settings**:



4. If necessary, change the name in the **Name** input field.
5. Choose the **Lucanet 25** version from the **Version** drop-down list.
6. Enter the **port** under which Lucanet.**Financial OLAP Server** is to be reached under in the network.

Notes:

- Alter the port entered after installation with Lucanet.**Server Administrator** (see **Ports** section in the Lucanet online help).
 - Only ports starting from **1024** can be used for the installation of Lucanet.**Financial OLAP Server** under **macOS**.
7. From the **Download from** drop-down list, select the download server Lucanet.**Financial OLAP Server** is to be installed from. The following options are available:
 - Choose **Determine fastest connection automatically** if Lucanet.**Software Manager** shall determine the download server automatically.

Note: If you want to exclude downloads from one or more servers when selecting the **Determine fastest connection automatically** option, you may have to block the URL(s) in question in your company's firewall (see subheading *Download server for Lucanet software components*). Alternatively, explicitly select one of the specified servers from the **Download from** drop-down list.

- Choose the desired download server from the drop-down list.

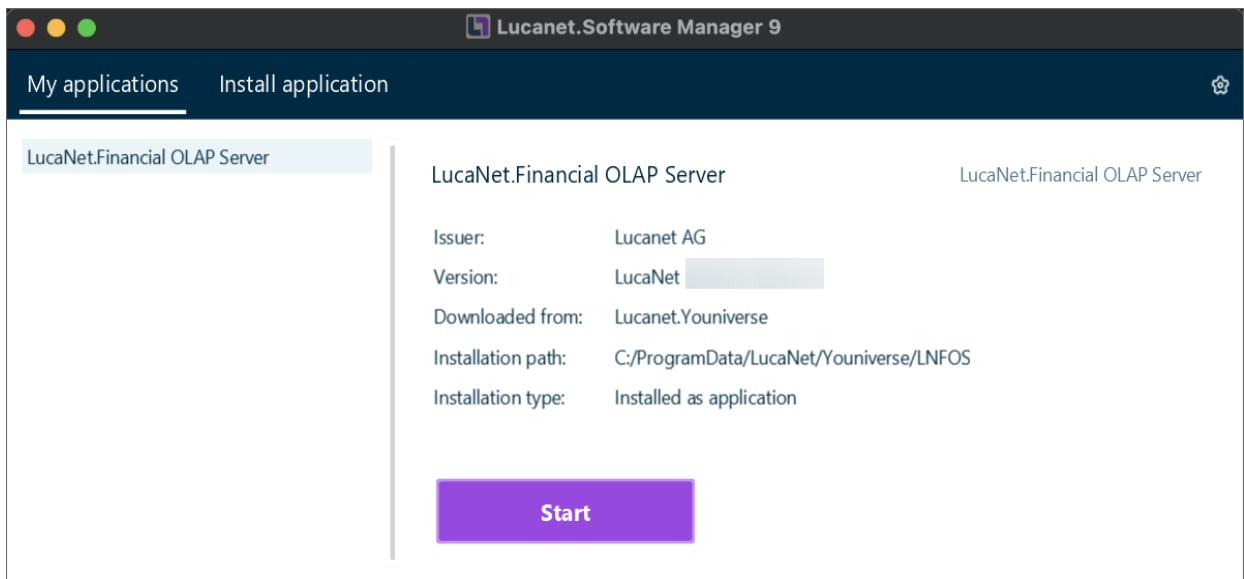
Server URL	Server location
https://youniverse.lucanet.com/	Germany
https://cdn.lucanet.com/resources/	worldwide (without China)
https://cdn.lucanet.cn/resources/	China

8. Click Install.

Lucanet.**Financial OLAP Server** is installed on your computer.

9. Click Finished when the message **Installation completed** is displayed.

This completes the installation of Lucanet.**Financial OLAP Server** and Lucanet.**Software Manager** is displayed as follows:



10. If necessary, click Start to start Lucanet.**Financial OLAP Server**.

Download server for Lucanet software components

The Lucanet software is distributed via a **CDN (Content Delivery Network)**. During the installation of the Lucanet components, the installation files are downloaded from the server that is the fastest to reach from your location. For the installation files of the Lucanet components, available servers are searched for using the following server URLs:

Server URL	Server location
https://youniverse.lucanet.com/	Germany
https://cdn.lucanet.com/resources/	worldwide (without China)
https://cdn.lucanet.cn/resources/	China

Directories

The following directories are created during installation:

Installation directory: Server applications are administrated by Lucanet. **Software Manager** and therefore do not have their own installation directory.

Program data directory: /Users/Shared/Lucanet/Youniverse/LNFOS
This directory contains all of the components of Lucanet. **Financial OLAP Server** that can be modified.
The directory contains the following sub-directories:

Directory	Content
[<i>release ID</i>] + [<i>version ID</i>]	Contains all program files of Lucanet. Financial OLAP Server
log	Contains log files
temp	Contains temporary files

4 Installing Lucanet.Server Administrator

Overview

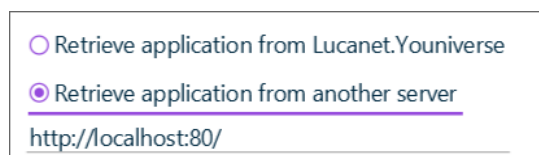
Lucanet. **Server Administrator** is the Lucanet user interface for the administration of Lucanet. **Financial OLAP Server**.

As soon as Lucanet. **Financial OLAP Server** is installed, you can install and start Lucanet. **Server Administrator** .
Lucanet. **Server Administrator** can be installed in Lucanet. **Software Manager** or via Lucanet. **Financial OLAP Server**.

Installing Lucanet.Server Administrator in Lucanet. Software Manager

To install Lucanet. **Server Administrator** in Lucanet. **Software Manager**:

1. Start Lucanet. **Software Manager**.
2. Start Lucanet. **Financial OLAP Server**.
3. Click the **Install application** tab in Lucanet. **Software Manager**.
4. Choose **Retrieve application from another server** and specify the URL of the Lucanet. **Financial OLAP Server** (e.g. **http://localhost:80**) in the displayed input field:



5. Click **Next**.
Lucanet. **Software Manager** displays the available applications.
6. Choose Lucanet. **Server Administrator** and click **Next**.

7. If necessary, change the displayed name in the **Name** input field:

Name:	<input type="text" value="Lucanet.Server Administrator"/>
Download from:	<input type="text" value="Determine fastest connection automatically"/>

8. From the **Download from** drop-down list, select the download server Lucanet.**Server Administrator** is to be installed from. The following options are available:

- Choose **Determine fastest connection automatically** if Lucanet.**Software Manager** shall determine the download server automatically.
Note: If you want to exclude downloads from one or more servers when selecting the **Determine fastest connection automatically** option, you may have to block the URL(s) in question in your company's firewall (see subheading *Download server for Lucanet software components*). Alternatively, explicitly select one of the specified servers from the **Download from** drop-down list.
- Choose the desired download server from the drop-down list.

Server URL	Server location
Address of the server specified in step 4	Depending on installation location of Lucanet. Financial OLAP Server
https://cdn.lucanet.com/resources/	worldwide (without China)
https://cdn.lucanet.cn/resources/	China

9. Click **Install**.

Lucanet.**Server Administrator** is installed.

10. Click **Finish**.

Lucanet.**Server Administrator** is displayed under **My applications**.

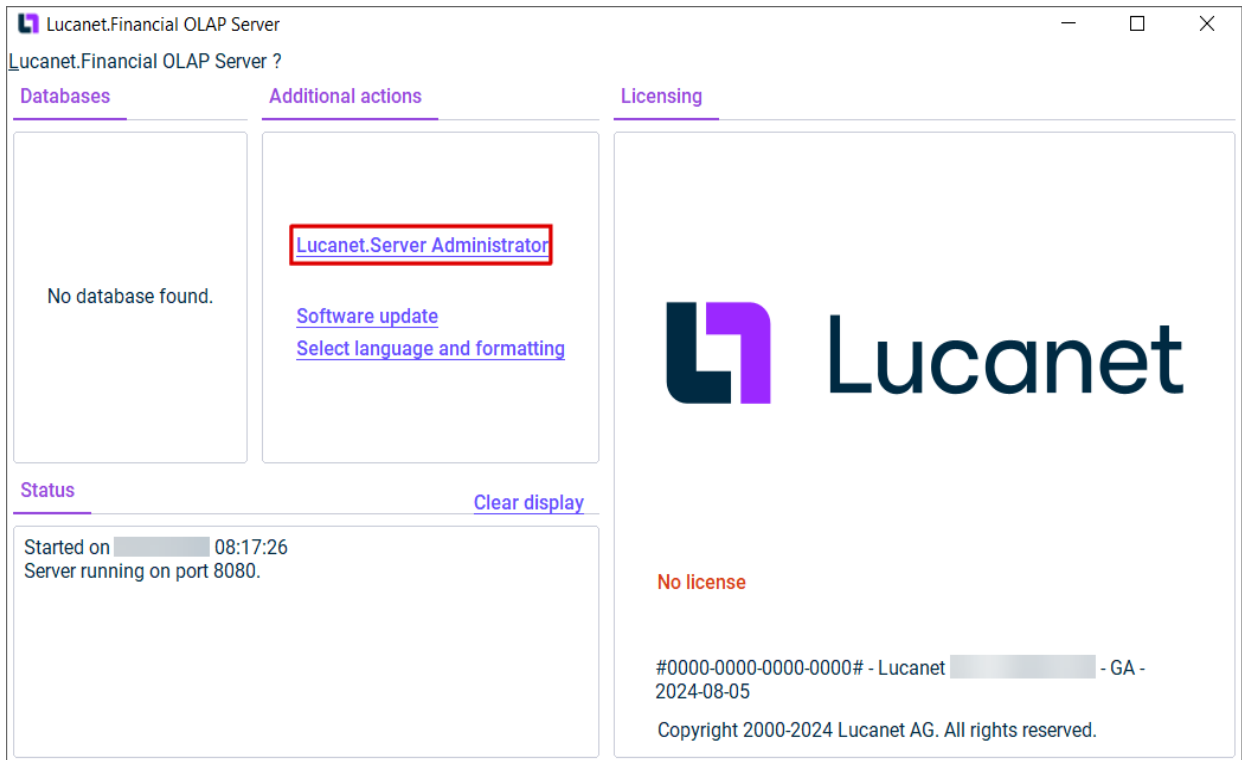
11. Start Lucanet.**Server Administrator**.

12. Retain the displayed user name and enter the password for Lucanet.**Server Administrator**.

Note: The initial password for Lucanet.**Server Administrator** is **simsalabim**. When you log in for the first time, you must change the password.

Installing Lucanet.Server Administrator via Lucanet.Financial OLAP Server

1. Start Lucanet.**Software Manager**.
2. Start Lucanet.**Financial OLAP Server**.
3. Click Lucanet.**Server Administrator** in the start window of Lucanet.**Financial OLAP Server**.



Lucanet.**Server Administrator** is installed and opened. Lucanet.**Server Administrator** is automatically entered in Lucanet.**Software Manager** under **My applications**.

4. You can then start Lucanet.**Server Administrator** from Lucanet.**Software Manager** by also clicking **Start**.

Download server for Lucanet software components

The Lucanet software is distributed via a **CDN (Content Delivery Network)**. During the installation of the Lucanet components, the installation files are downloaded from the server that is the fastest to reach from your location. For the installation files of the Lucanet components, available servers are searched for using the following server URLs:

Server URL	Server location
https://youniverse.lucanet.com/	Germany
https://cdn.lucanet.com/resources/	worldwide (without China)
https://cdn.lucanet.cn/resources/	China

Directories

The following directories are created during installation:

Installation directory:	Client applications are administrated by Lucanet. Software Manager and therefore do not have their own installation directory.
Program data directory:	The directory can be found under the following path: /Users/Shared/Lucanet/Youniverse/.users/<User>/<Server>/LNSA The directory contains the following sub-directories:

Director y	Content
config	Contains configuration files
link	Contains desktop icon
log	Contains log files
temp	Temporary directory

5 Activating Lucanet software

Overview

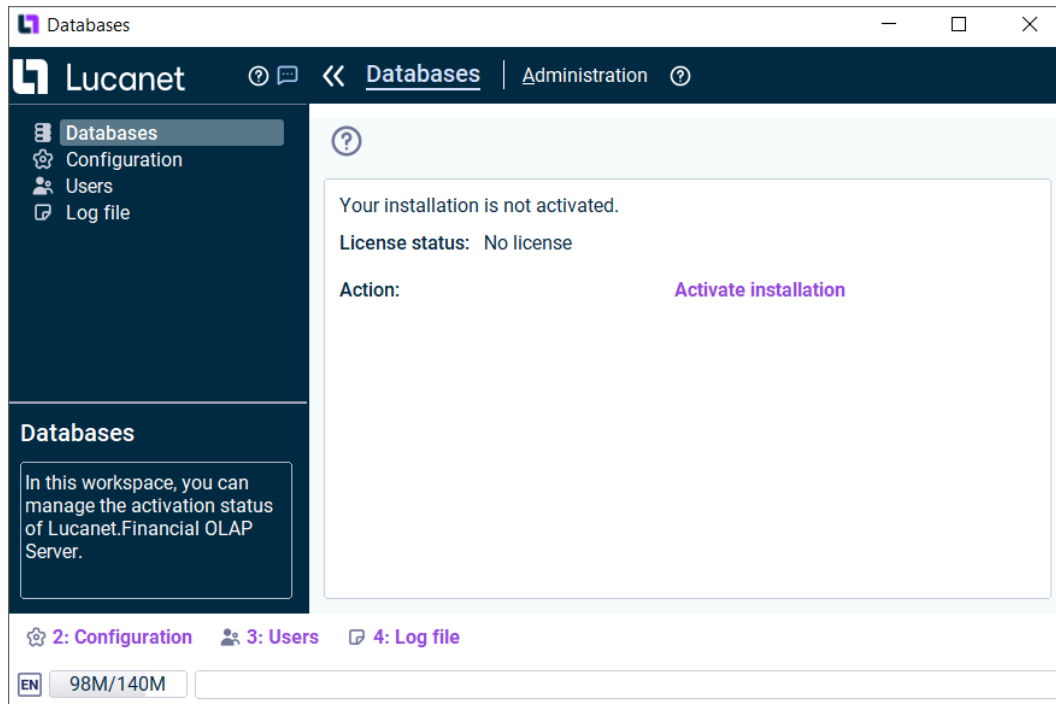
After installing Lucanet.**Financial OLAP Server** and Lucanet.**Server Administrator**, the Lucanet software must be activated. Lucanet.**Financial OLAP Server** is activated in Lucanet.**Server Administrator** by using an activation code. You receive the activation code via e-mail from Lucanet.

Note: To be able to activate Lucanet.**Financial OLAP Server**, Lucanet.**Server Administrator** must have an Internet connection.

Instructions

To activate a new installation:

1. If necessary, start Lucanet.**Software Manager**.
2. Start Lucanet.**Financial OLAP Server** from Lucanet.**Software Manager**.
3. Start Lucanet.**Server Administrator** from Lucanet.**Software Manager**. Lucanet.**Server Administrator** is displayed as follows:



4. Click **Activate installation**.

The **Activate installation** dialog is displayed.

5. In the **Activation code** input field, specify the activation code that you received from Lucanet and click **OK**.

After successful transmission of a valid activation code to the Lucanet license server, the status of the license changes to **Activated** and Lucanet.**Financial OLAP Server** is ready for use.

6 Updating Lucanet programs

Overview

To update Lucanet programs, you must update Lucanet.**Financial OLAP Server**. The components Lucanet.**Software Manager**, Lucanet.**Server Administrator**, Lucanet.**Financial Client**, and Lucanet.**Auto Task Client** check during startup whether the associated Lucanet.**Financial OLAP Server** has been updated. If Lucanet.**Financial OLAP Server** has been updated, all the other Lucanet software components are automatically updated when they are started.

Note on updating Lucanet.Software Manager: Because administration permissions are required to update Lucanet.**Software Manager**, you must first specify the password to receive administrator permissions before the update can occur.

Update options

Lucanet.**Financial OLAP Server** can be updated manually from Lucanet.**Server Administrator** or automatically via job control:

- The following options are available for manual updating:
 - Direct update of Lucanet.**Financial OLAP Server**
 - Update via Lucanet.**Server Administrator**

You can find the description of these update options in the online help under **Complete Description | Administration | Administration at the system level | Administration | Performing a software update**.

- Lucanet.**Financial OLAP Server** can be updated automatically at any time using a corresponding job in Lucanet.**Server Administrator**. In the configuration of the job, you can define the release to be automatically updated to and whether service packs are to be automatically installed. For information on creating and configuring an update job, see the online help under **Complete Description | Administration | Administration at the system level | Job Control | Jobs | Restart the server**.